

Bf Notes

- 1st March 2015 -



BF NOTES

Contents

1. Bf Notes Introduction.....	3
2. Add/Edit Bf Note	4
3. Browse Bf Notes.....	6
4. Import/Export	7
5. Resources	8



BF NOTES

1. Bf Notes Introduction

Bf Notes add-on is used to add your own notes within Bf Bot Manager for any selection that is available for betting at Betfair. Once the note is added for selection it is being automatically saved to your PC. All Bf Notes are automatically loaded when Bf Bot Manager is started. When software loads market that has selection for which Bf Note exists then it automatically highlights that market in markets data grid view with yellow background color. User is then able to open “Selections Form” and see which selections have notes by looking at “Notes” column.

IMPORTANT: Bf Notes is not standalone application, it is add-on for Bf Bot Manager V2. User must have full license key for Bf Bot Manager V2 and full license key for Bf Notes in order to use Bf Notes!

Bf Notes IS NOT used for automatic bet placement!

On Image 1 we can see that some market names have yellow background and this means that Bf Notes exist for one or more selections on that market.

Image 1

R.	S.	Start time	Market Name	S.	1st Favorite
X	<input checked="" type="checkbox"/>	06-Oct 17:00	Towc/3m Hcap Chs	S	Bynack Mhor
X	<input checked="" type="checkbox"/>	06-Oct 17:05	Durb (RSA) R8/R8 1200m Hcap	S	2. State Blue
X	<input checked="" type="checkbox"/>	06-Oct 17:08	Hove/A3 515m	S	3. Dilton Eagl
X	<input checked="" type="checkbox"/>	06-Oct 17:10	Nott/1m2f Hcap	S	Gritstone
X	<input checked="" type="checkbox"/>	06-Oct 17:15	Navan/1m Mdn	A	Pirate Chest
X	<input checked="" type="checkbox"/>	06-Oct 17:18	BVue/A7 470m	A	1. Jayjay Hoy
X	<input checked="" type="checkbox"/>	06-Oct 17:20	Ludl/2m4f Beg Chs	A	Golan Way
X	<input checked="" type="checkbox"/>	06-Oct 17:27	Hove/A2 515m	A	1. Fairy Royal
X	<input checked="" type="checkbox"/>	06-Oct 17:30	Towc/2m Nov Hrd	A	Kack Handec
X	<input checked="" type="checkbox"/>	06-Oct 17:37	BVue/A5 470m	A	3. Tumpike B
X	<input checked="" type="checkbox"/>	06-Oct 17:40	Nott/1m2f Mdn Stks	A	Significant Mc
X	<input checked="" type="checkbox"/>	06-Oct 17:45	Navan/1m2f Hcap	A	Gleaming Silv
X	<input checked="" type="checkbox"/>	06-Oct 17:47	Hove/A4 515m	A	6. Beenleigh I
X	<input checked="" type="checkbox"/>	06-Oct 17:50	Ludl/2m Mdn Hrd	A	Akula

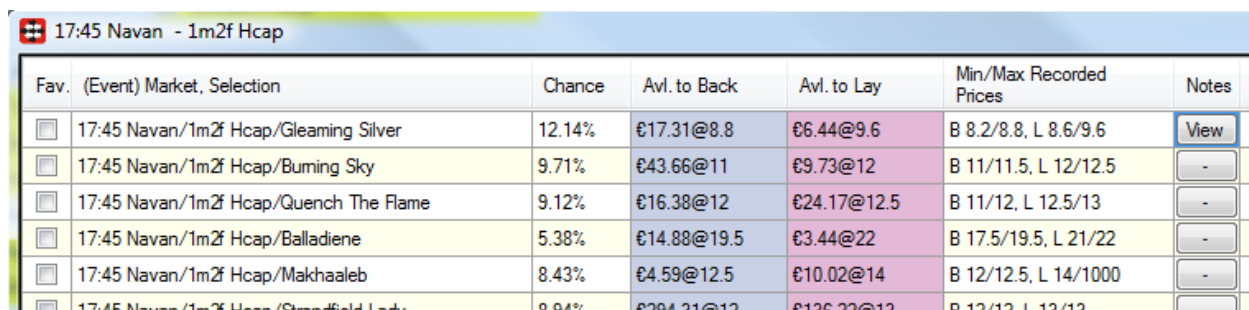


BF NOTES

2. Add/Edit Bf Note

To add or edit existing Bf Notes you need to open “Selections Form” by clicking on button at main markets data grid view in column “Sl.”. At Image 2 we can see “Notes” column, clicking on button in this column will open form for adding or editing existing Bf Notes for that selection. If there are one or more notes for selection then there is a text “View” on button. At Image 2 we can see that notes exist for selection “Gleaming Silver”.

Image 2



Fav.	(Event) Market, Selection	Chance	Avl. to Back	Avl. to Lay	Min/Max Recorded Prices	Notes
<input type="checkbox"/>	17:45 Navan/1m2f Hcap/Gleaming Silver	12.14%	€17.31@8.8	€6.44@9.6	B 8.2/8.8, L 8.6/9.6	View
<input type="checkbox"/>	17:45 Navan/1m2f Hcap/Burning Sky	9.71%	€43.66@11	€9.73@12	B 11/11.5, L 12/12.5	-
<input type="checkbox"/>	17:45 Navan/1m2f Hcap/Quench The Flame	9.12%	€16.38@12	€24.17@12.5	B 11/12, L 12.5/13	-
<input type="checkbox"/>	17:45 Navan/1m2f Hcap/Balladiene	5.38%	€14.88@19.5	€3.44@22	B 17.5/19.5, L 21/22	-
<input type="checkbox"/>	17:45 Navan/1m2f Hcap/Makhaaleb	8.43%	€4.59@12.5	€10.02@14	B 12/12.5, L 14/1000	-
<input type="checkbox"/>	17:45 Navan/1m2f Hcap/Strandfield Lady	8.94%	€294.31@12	€136.22@13	B 12/12, L 13/13	-

To add new note just click on button in column “Notes.” After that new form like on Image 3 will appear. Basic details of selected selection are displayed in top left corner. If there is more than one note for this selection then you can use navigation buttons to view other notes. You can always use “+” button to add new note for this selection.

At large textbox on left side you can enter any comment for this selection that you want to save for future. This can be anything, from prices to detailed explanation of selection behavior during race or soccer match.

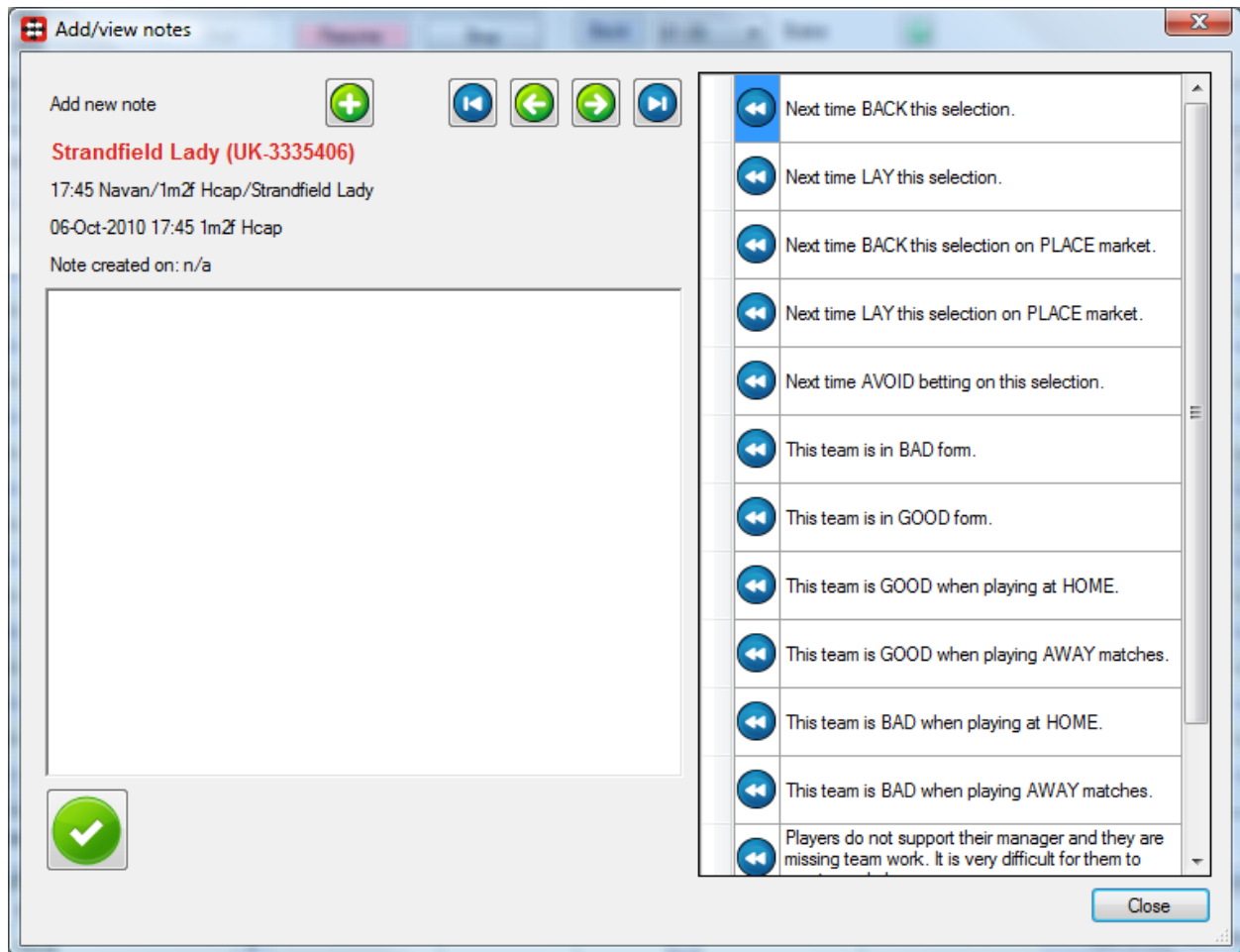
At right side is data grid view with predefined comments. You can simply add any of those comments to your note textbox on left side by clicking on blue icon at left side of comment. If you scroll down to the bottom of this grid then you will be able to add your own predefined comments that will be automatically saved for future use. To delete any of predefined comments just select it by clicking on header of that row and press “Delete” key on keyboard.

At the end you must press green “Confirm” button in bottom left corner. This will save your note. If you click “Close” button before clicking on “Confirm” button then your note will not be saved.



BF NOTES

Image 3

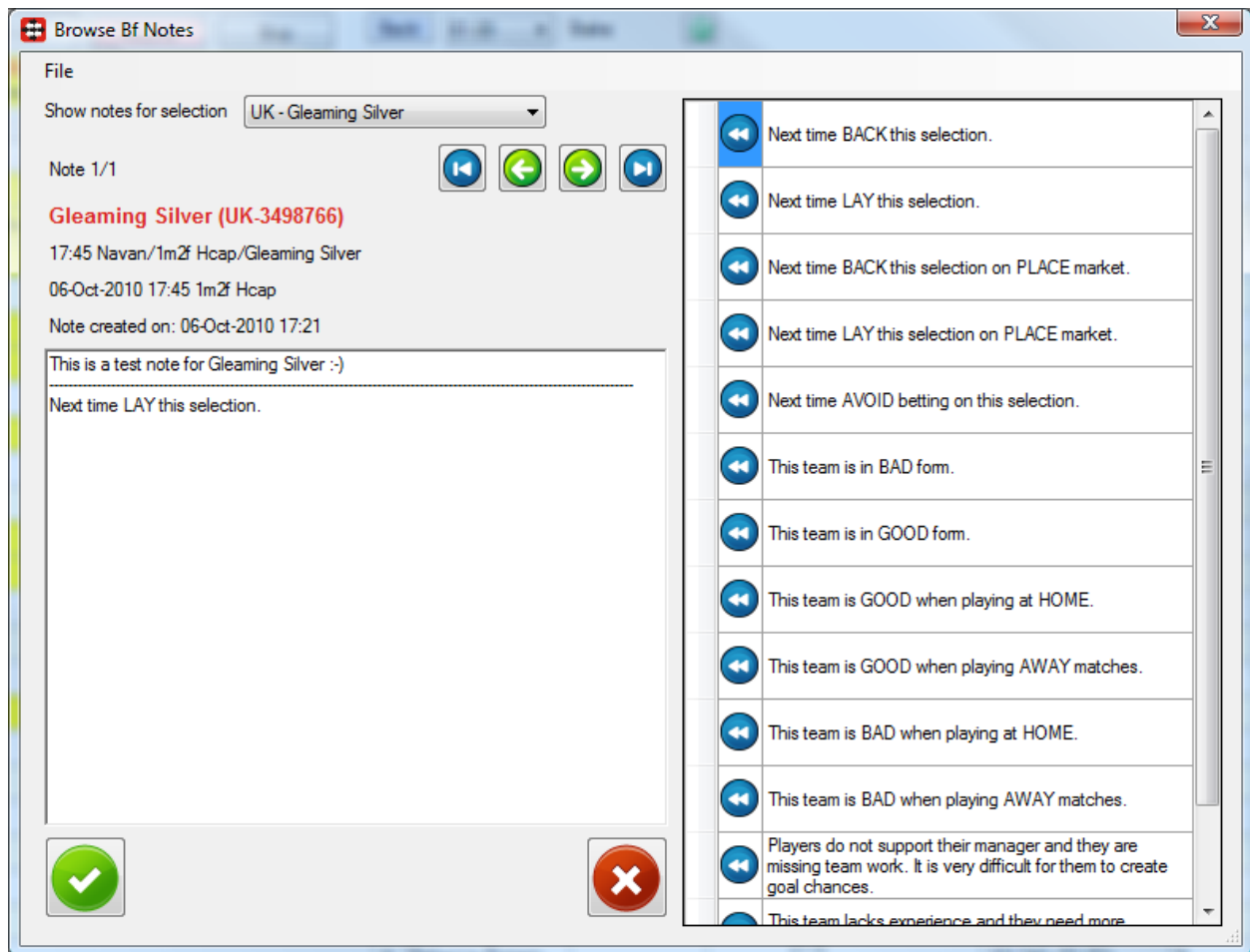


BF NOTES

3. Browse Bf Notes

To browse and manage your existing Bf Notes without loading markets you need to click on menu item "Bf Notes->Browse Bf Notes" at main window. This will open window like on Image 4. At this form you are able to view and edit existing notes, but you are unable to add new ones.

Image 4



BF NOTES

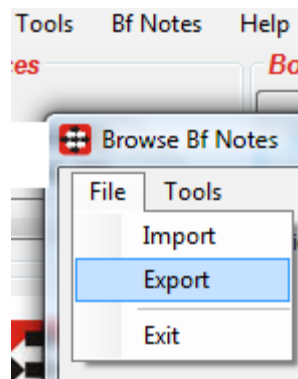
4. Import/Export

It is recommended that you export your Bf Notes regularly and save them to your backup device (e.g. CD, DVD, hard drive...). You can export all your Bf Notes at any time by going to menu item “Bf Notes->Browse Bf Notes->File->Export”.

All notes are always saved in XML format. They can simply be imported by going to menu item “Bf Notes->Browse Bf Notes->File->Import”. When you import notes then your existing notes will be lost!

As you keep adding notes size of your notes file will get bigger and bigger. It is recommended that you use “Bf Notes->Browse Bf Notes->Tools->Remove Bf Notes->Older than X days” menu items from time to time and remove notes older than X days or months. By doing this you will free space and also remove old notes that are not useful any more. It is easier to use this menu item to remove old notes instead of removing one by one note manually by using delete button.

Image 5



BF NOTES

5. Resources

Contact page at Bf Bot Manager web site

<http://www.bfbotmanager.com/cgi-bin/contact.pl>

FAQ page at Bf Bot Manager web site

<http://www.bfbotmanager.com/cgi-bin/faq.pl>

Bots and add-ons page at Bf Bot Manager web site

<http://www.bfbotmanager.com/cgi-bin/bots.pl>

